

ARDROSSAN DOLOMITE MINE

Project Information Update #3

August 2025

Background

OneSteel Manufacturing Pty Limited (Administrators Appointed) (**OneSteel**) has been mining in Ardrossan since 2000 when it was spun out from BHP.

OneSteel was placed into Administration on 19 February 2025 by the South Australian Government.

KordaMentha are the Administrators of OneSteel and running the business on a *business-as-usual* basis.

The Ardrossan Dolomite Mine is located 2km south-west of Ardrossan and opposite the Ardrossan Port. Operating since 1950, the Mine currently produces around 550,000 tonnes/year that is either exported or sold locally.

The mine footprint includes one (1) large pit, six (6) waste rock dumps (WRDs), soil stockpiles, bioremediation pads and retention dam (Map 1). Importantly, the WRDs are progressively rehabilitated with native vegetation as mining shifts through the site. Blasting, crushing, grinding and screening occurs in pit, and further crushing, screening and stockpiling occurs at the adjacent Ardrossan Port.

The mine quarry operates during the day, 5 days per week but can operate 24/7 if needed. Ship loading activities may occur on weekends dependant on demand; this activity occurs outside of the mine area and supports a workforce of 25 full time equivalents (FTEs) and contractors, many of whom live locally on the Yorke Peninsula.



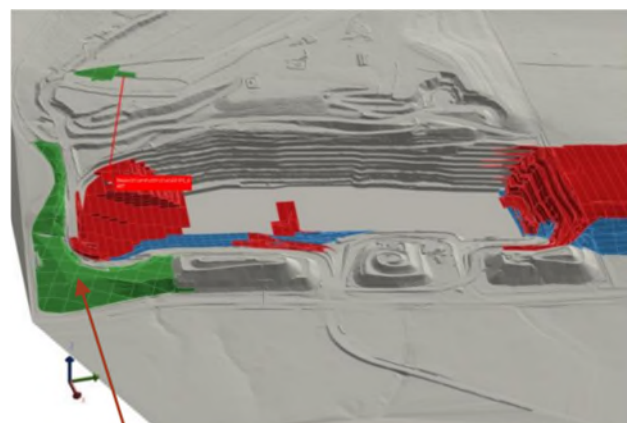
Project Update: Current Operations

All mining operations are managed in accordance with an approved Program for Environment Protection and Rehabilitation (PEPR) and for Ardrossan this also includes a Mine Operations Plan (MOP) for the private mine section of the site. Additional management controls are further defined by an Environmental Management Plan (EMP), Sub-Plans and Work Instructions, and relevant standards and legislation.

The current approved PEPR consists of:

- Open pit mining
- Southern bund construction and waste rock deposition
- Mobile crushing and screening plant (not yet constructed)
- Minor expansion of WRDs adjacent highway
- Improved alignment with current standards

The new southern bund will join onto the adjacent WRD, providing added noise shielding and visual screening. Construction commences soon and is scheduled for completion in 2028. Progressive rehabilitation will continue, which includes respreading of topsoil and growth of native species. Mining of the Southern Pit is projected to be completed by February 2044.



Southern Bund Completion – 2028

- Target resource
- Non-target material (waste)
- Waste rock dump

ARDROSSAN DOLOMITE MINE

Project Information Update #3

August 2025

Ardrossan Future Plans

SIMEC Mining are seeking to extend the life of the Ardrossan Mine operation (+100 years) by securing approvals to develop a northern pit. This pit would be operated in a similar manner to the current southern pit and will include:

- Progressive development of the northern pit
- Development of new WRDs between pit and highway
- Continuation of stockpile / export via Ardrossan Port and support local sales

Throughout this process we will continue to engage with and inform community leaders and stakeholders

Approval Process

Steps required to secure the expansion of the northern operation are defined by the Department for Energy and Mines (DEM).

OneSteel expects to submit a Mineral Lease Application for a tenement in the north pit area by 12th September 2025. Once that tenement has been granted, an updated PEPR will be developed and submitted to DEM for approval. The updated PEPR will cover off existing operations in the south pit and also incorporate the proposed north pit mining.

To support the development of the north pit the following activities have been completed or are underway:

- Documentation of specialist studies focussing on potential environmental impacts
- Developing environmental targets for the management of impacts
- Securing secondary approvals (e.g. native vegetation clearance)
- Responding to stakeholder questions raised during the MLA review period
- Engaging the local community.

Acceptance of the application will mean granting of approvals and lease by DEM (usually with conditions). Site-based environmental and stakeholder management plans will be continuously refined.

The Mineral Lease Application will be made available for public comment through the Department's [website](#) following submission to DEM.

Ardrossan North: Studies

Several preliminary technical studies have been completed as part of the approval process. The studies assist in identifying any constraints and inform and support the project design.

Ardrossan Update August 2025

Groundwater and seepage assessments have been conducted to formulate models applicable to the Ardrossan North Expansion. Studies of air quality and noise have identified sensitive receptors to inform the creation of models and any potential impact events. An ecological assessment of the project area has been conducted to identify vegetation communities and fauna species.

A conceptual mine closure plan is ongoing. Site surveys, a mine closure risk assessment and gap analysis and final landform designs will assist in developing the plan.



What's Next?

OneSteel is committed to engagement of the local community as the project progresses. Critically important groups and bodies include Yorke Peninsula Council, Ardrossan Progress Association, landholders, agricultural lease holders (for non-mining areas), and other stakeholders (including Traditional Owners of the region). Formal engagement with DEM is ongoing to develop the Mineral Lease Application and revise the PEPR.

Further Information

For further information, please contact:

Will Lynch, Ardrossan Site Operations Manager

M: 0430 369 855

E: will.lynch@gfgalliance.com

Raquel Stankovic, Land Access and Engagement Manager.

M: 0423 937 526

E: mininginfo@simecgfg.com