

Project Information Update #2

May 2024

Background

The Ardrossan Dolomite Mine is located 2km south-west of Ardrossan and opposite the Ardrossan Port. Operating since 1950, the Mine currently produces around 550,000 tonnes/year of dolomite that is either exported or sold locally.

The mine footprint includes one (1) large pit, six (6) waste rock dumps (WRDs), soil stockpiles, bioremediation pads and retention dam (Map 1). Importantly, the WRDs are progressively rehabilitated providing opportunity for native vegetation establishment as operations continue through life of mine. Blasting, occurs in pit, with approval for a mobile crusher to be constructed and utilised on an as-needs basis. Further crushing, screening and stockpiling occurs at the adjacent Ardrossan Port.

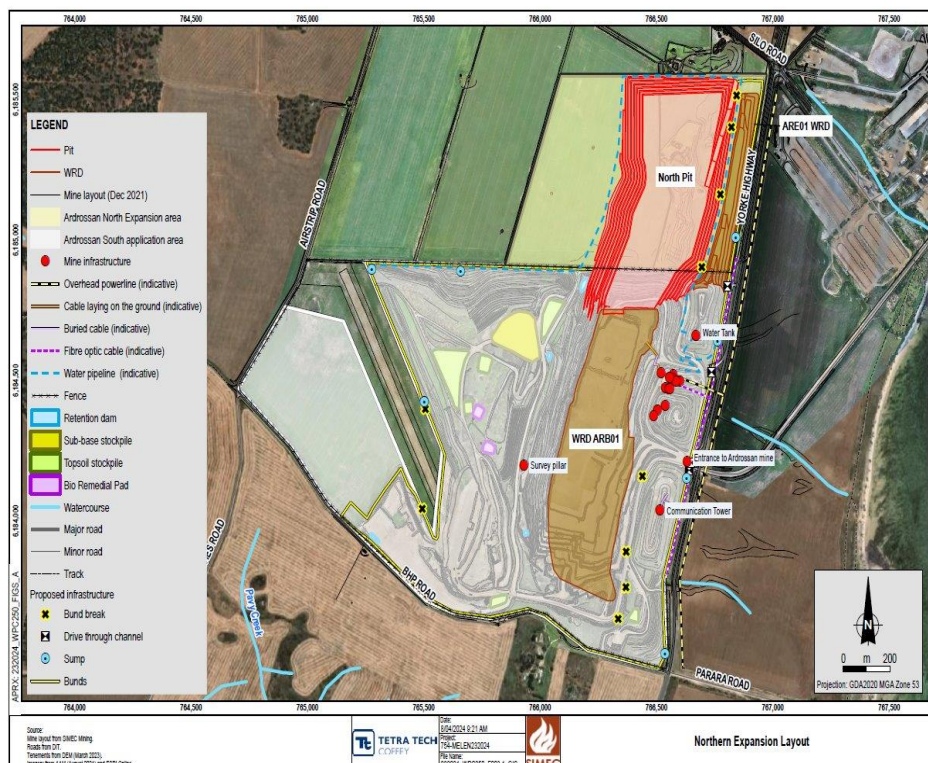
The depth of mining is limited to avoid interaction with local groundwater. The mine quarry operates during the day, 5 days per week but can operate 24/5 if needed. Ship loading activities may occur on weekends dependant on demand, this activity occurs outside of mine area. The operation supports a workforce of 25

full time equivalents (FTEs), many whom live locally on the Yorke Peninsula.

Management

All mining operations are managed in accordance with an approved Program for Environment Protection and Rehabilitation (PEPR) and for Ardrossan this also includes a Mine Operations Plan (MOP) for the private mine tenement of the site. Additional management controls are further defined by an Environmental Management Plan (EMP), Sub-Plans and Work Instructions, and relevant standards and legislation.

SIMEC Mining monitors a range of potential impacts including dust, noise, groundwater and blasting activities. A critical management activity that supports this work includes the use of water carts that utilise excess water in the base of the pit for dust suppression.

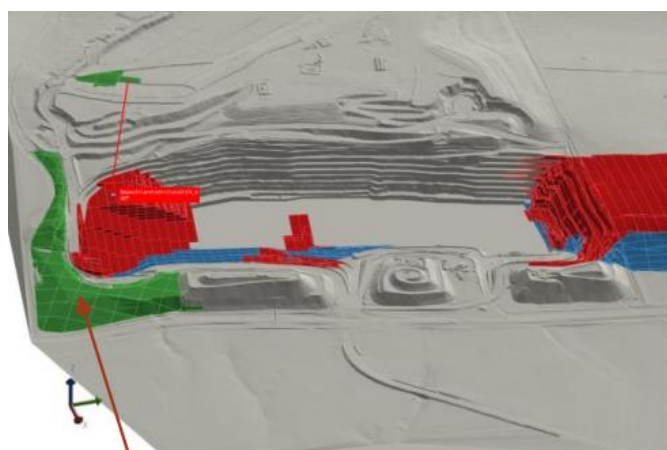


Current Operations

A PEPR/MOP revision was approved on the 2nd of February 2024 and consists of:

- Southern bund visual and noise attenuation and waste rock deposition
- Mobile crushing and screening plant (not yet constructed)
- Minor expansion of WRDs adjacent highway
- Improved alignment with current standards

The new southern bund will join onto WRD5, providing added noise attenuation and visual screening. Progressive rehabilitation will be ongoing. Construction commences soon and is scheduled for completion in 2028. Spreading of topsoil and rehabilitation continues. Mining of the Southern Pit is projected to be completed February 2044.



Southern Bund Completion – 2028

- Target resource
- Non-target material (waste)
- Waste rock dump

Ardrossan Future Plans

SIMEC Mining are seeking to extend the life of the Ardrossan Mine operation (+100 years) by securing approvals to develop a northern pit. This pit would be operated in a similar manner to the current southern pit:

- Progressively develop a northern pit

- Develop new WRDs between pit and highway in addition to in-pit dumping of the Ardrossan South Pit once mining concludes
- Continue to stockpile / export via Ardrossan Port and support local sales
- Complete and update the environmental approvals documentation including the PEPR to cover the northern operations
- Continue to engage with and inform the community and stakeholders

Approval Process

Steps required to secure the expansion of the northern operation are defined by the Department for Energy and Mines (DEM). At a high level it will include conversion of the current Retention Lease (which expires in August 2024) to a Mining Lease (ML) through the submission of a Mine Lease Application (MLA). This application contains the documentation of the specialist technical studies undertaken to support the application; and responding to stakeholder questions raised during the MLA review period. Acceptance of the mining lease application will mean granting of approvals and lease by the mine regulatory department (usually with conditions). Submission of an updated environmental approval document (PEPR) once the tenement has been granted, will include existing Southern and the proposed Northern operation, including any changes to mining and waste rock dump building.



Ardrossan North: Studies

Several technical environmental impact assessment studies have been completed as part of the approval

process. The studies assist in identifying any constraints and inform and support the project design and future implementation.

Groundwater and seepage assessments have been conducted to formulate groundwater models applicable to the Ardrossan North Expansion. Studies of air quality and noise have identified sensitive receptors to inform the creation of models and any potential impact events. An ecological assessment of the project area has been conducted to identify the distribution of vegetation communities and confirm the presence of bird species.

Development of a conceptual mine closure plan is ongoing. Site surveys, a mine closure risk assessment and gap analysis and final landform designs will assist in developing the plan, which will be refined on an ongoing basis as mining progresses.

Community Consultation

SIMEC Mining continues to manage and respond to suggestions and complaints from the community via the complaints management process.

An engagement and communication plan has been integrated with project feasibility development and planning as well as the regulatory approvals process to ensure opportunities to include stakeholder feedback in the development stage are received prior to decisions being made.

What's Next?

SIMEC Mining is committed to engagement of the local community as the project progresses. Critically important groups and bodies include Yorke Peninsula Council, Progress Association, Landholders, agricultural lease holders (for non-mining areas), and other stakeholders (including Traditional Owners of the region). Formal engagement with DEM is ongoing to develop the North Mine Lease Application and revise the PEPR/MOP. As the North Mine option is developed, technical input is collated, analysed and shared with key local stakeholders.

Further Information

SIMEC Mining will provide general and project related information as it becomes available via its website gfgalliancewhyalla.com/community/updates/. However, if you have any specific queries, please do not hesitate to reach out and contact:

Will Lynch, Ardrossan Site Operations Manager
M: 0430 369 855
E: will.lynch@gfgalliance.com

Raquel Stankovic, Land Access and Engagement Manager
M: 0423 937 526
E: mininginfo@simecggfg.com

