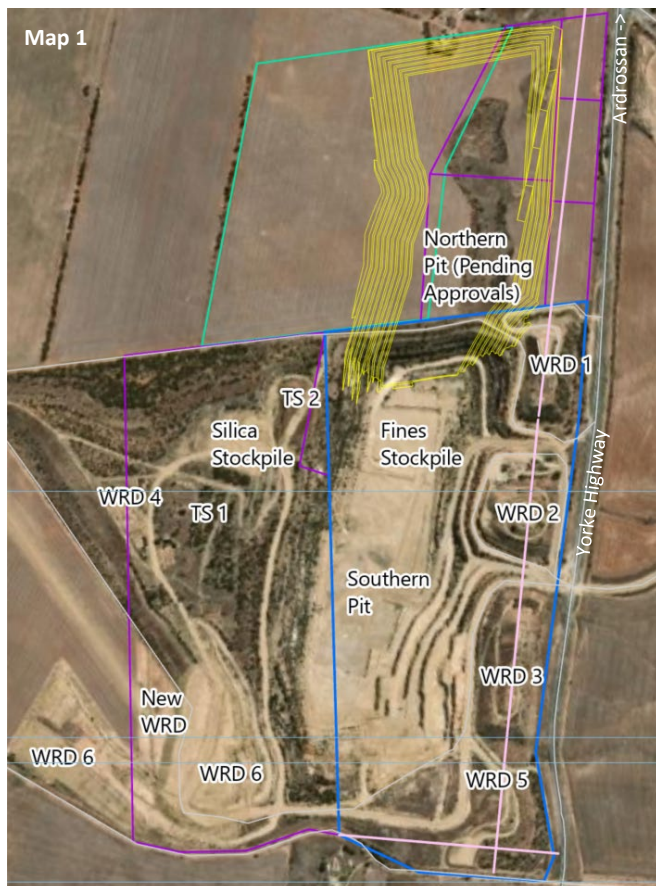


Background

The Ardrossan Dolomite Mine is located 2km south-west of Ardrossan and opposite the Ardrossan Port. Operating since 1950, the Mine currently produces around 600,000 tonnes/year that is either exported or sold locally. The mine includes one large pit, six waste rock dumps (WRDs), soil stockpiles, bioremediation pads and retention dams (Map 1). WRDs are progressively rehabilitated with native vegetation.

Blasting, crushing, grinding and screening occurs in pit, and further crushing, screening and stockpiling occurs at the adjacent Ardrossan Port. The depth of mining is limited to avoid interaction with local groundwater. The mine mostly operates during the day, but can operate 24/7 if needed, and supports a workforce of 25 full time equivalents (FTEs), many whom live locally on the Yorke Peninsula.



Management

All mining operations are managed in accordance with an approved Program for Environment Protection and Rehabilitation (PEPR), which is further defined by an Environmental Management Plan (EMP), Sub-Plans and Work Instructions, and relevant standards and legislation.

SIMEC monitor for potential impacts from dust, noise and vibration. Water trucks operate regularly to suppress dust on windy days.

Project Update: Current Operations

Mining of the Southern Pit is project to be complete February 2044. A PEPR revision is currently underway which will integrate minor changes to the operation including:

- Proposed southern bund
- Mobile crushing and screening plant (in pit)
- Minor expansion of WRDs adjacent highway (in fill between WRD5 and WRD3)
- Improved alignment with current standards

The new southern bund will join onto WRD5, providing added noise attenuation and visual screening. Construction will be from 2023 – 2027, and it will be rehabilitated with native species. SIMEC Mining are also formalising an Engagement and Communications Plan for the operation.

Looking Forward: Proposed Northern Pit

SIMEC Mining are seeking to extend the life of the Ardrossan Mine operation (+100 years) by securing approvals to develop a northern pit. The north pit would be operated in similar way to south pit:

- Progressively develop northern pit
- Develop new WRDs between pit and highway
- Continue to stockpile / export via Ardrossan Port and support local sales.

Informing the Approvals Process

Preliminary technical studies have been commissioned (geochemical, groundwater, noise, air quality, ecology). The studies will identify any constraints and inform and support the project design and approvals processes. Community consultation with local stakeholders further contributes to and helps to shape the project.

Community Consultation

SIMEC Mining is formalising an Engagement and Communication Plan (the Plan) with a commitment to providing current and relevant information about the Project, and consulting and involving key stakeholders affected by the project in a meaningful manner.

The Plan is integrated with Project feasibility development and planning, and the regulatory approvals process, to ensure opportunities to include stakeholder feedback are received prior to decisions being made. The Plan will be included in the Ardrossan (South) PEPR update.

Approvals Process

Steps required to secure expansion of the northern operation are set by the Department for Energy and Mines (DEM), and at a high level include:

- Conversion of Retention Lease to Mining Lease through delivery of a Mine Lease Application (MLA)
- Securing secondary approvals, as required (e.g. native vegetation clearance)
- Responding formally to stakeholder questions raised during MLA review period
- Granting of approvals and lease (usually with conditions)
- Expansion of PEPR to include existing Southern and new Northern operation.
- Refinement of associated management plans.

What's Next?

Technical studies will be delivered over the next few months and will inform impact assessments undertaken for the project. Project designs may be further refined in response.

SIMEC Mining will continue to engage with local stakeholders as needed; next presentation will be to Local Council on 22nd March.

Once technical input is collated and analysed, SIMEC will present outcomes to stakeholders and what this means for the project.

Ongoing formal engagement will continue with DEM to facilitate the Mine PEPR update (South), and development of the North Mine Lease Application (and later PEPR update).

Further Information

For further information, please contact:

Denise Sharp, SIMEC's Community and Stakeholder Engagement Advisor.

M: 0447 039 358

E: denise.sharp@gfgalliance.com

Will Lynch, Ardrossan Site Operations Manager.

M: 0430 369 855

E: will.lynch@gfgalliance.com

