

SMR Operations and Development

Operations at SIMEC Mining’s South Middleback Ranges (SMR) include mining of both hematite and magnetite resources. Historically, the region has been known for its extensive hematite resources. However, as these resources deplete, SIMEC Mining is transitioning into producing predominantly magnetite through the continuation of its magnetite operations and the development of the Magnetite Expansion Project 2 (MEP2).

The MEP2 proposes to increase magnetite production to nearly 3 times what is produced today at the SMR and extend the life of mine by more than 20 years. MEP2 is progressing well, with environmental and technical investigations continuing, regulatory documentation being prepared and ongoing discussions occurring with potential investors.

In parallel to the MEP2 activities, SIMEC Mining are undertaking a Life of Mine (LOM) program of works to connect existing operations under the LOM (Life of Mine plan) to the future operations proposed under MEP2. The purpose of the LOM program of works is to enable the continuation of magnetite and hematite mining until the commencement of MEP2 and ensure continuity of our overall mining operations.

Hematite Iron Ore Operations

Cooks North Deposit

The Cooks North and Cooks Northwest Projects are two key elements of SIMEC Mining’s LOM program to extend the life of hematite mining at SMR. Cooks North mining operation is underway with Cooks Northwest mining operation to commence in early to mid-2024.

Iron Knight South Deposit

As part of the hematite LOM program, SIMEC Mining is considering the reopening of the Iron Knight South hematite deposit to support the hematite life of mine plan. Mining of this resource would be small scale, with minor additions to existing waste rock dumps.

Regulatory Approval Status

Cooks North

- ✓ Mining Lease 6537 approved 22 August 2022
- ✓ Program for Environmental Protection and Rehabilitation (PEPR) approved 20 March 2023

Iron Knight

- Program Notification required to recommence mining in the historic pit

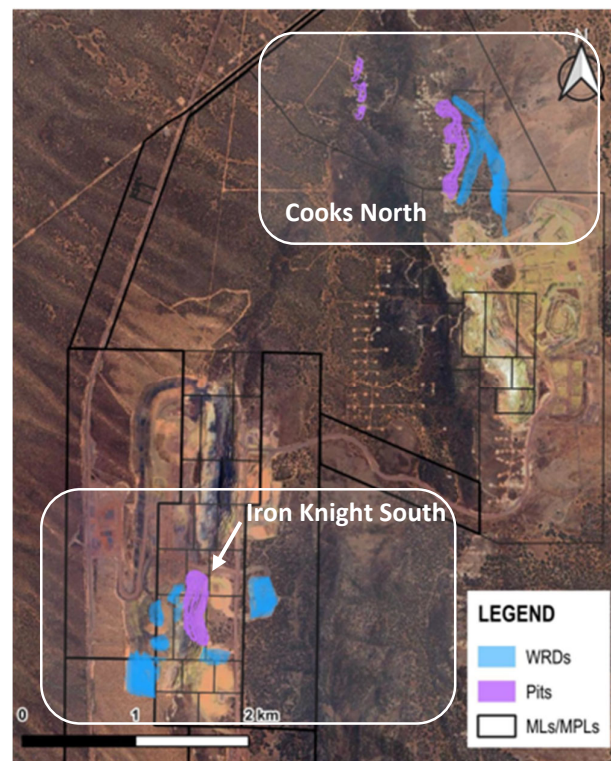


Figure 1: Cooks North and Iron Knight are SIMEC Mining’s hematite deposits in the SMR. Cooks North is in operation and Iron Knight South is a historical pit that is being considered for a small scale additional mining campaign.

Magnetite Iron Ore operations

Duchess Pit Deposit

The LOM program of works for the magnetite operation includes the initial cut back of the existing pit (Iron Magnet pit) to enable further extraction of the Duchess resource and allow for ongoing production of magnetite concentrate from the SMR.

Increased waste storage capacity will be required for waste rock, as well as for magnetite tailings. To achieve this, SIMEC Mining is proposing the development of an extended waste rock storage facility within existing tenements and the construction of a raise 9 for the existing magnetite tailings storage facility (TSF) to allow for safe and extended use.

The current mine access road, entered from Port Lincoln Highway will need to be re-routed around the proposed waste rock footprint to allow for the extended facility.

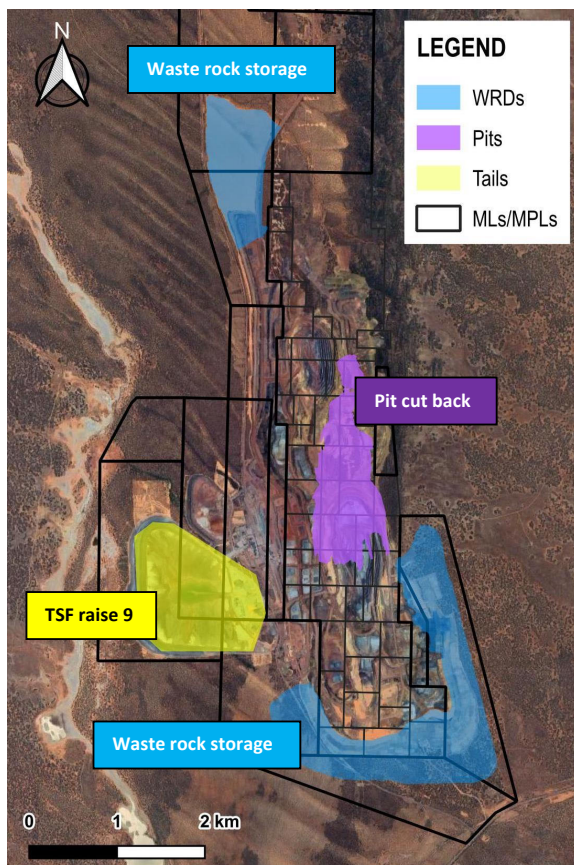


Figure 2: Proposed activities as part of duchess operational LOM works.

The proposed upgrades to the existing processing plant will also be key to enabling the continued production of magnetite concentrate, prior to execution of MEP2. These upgrades include:

- Incorporation of direct reduction flotation circuit, which will enable the recovery and concentration of high silica ore by adding a flotation reagent to remove silica containing minerals from the ore
- Repurposing of existing equipment to enable concentrate dewatering is being considered
- Enhancement of the existing concentrator to produce up to around 20% more ore ('debottlenecking')
- Expansion of the existing Dry Low Intensity Magnetic Separation Plant is under consideration

These technologies will enable the use of ore that was previously considered waste, while also increasing throughput and improving operational efficiency of the existing mine.

To accommodate additional tailings produced in advance of MEP2 execution, SIMEC Mining are also undertaking studies to investigate the potential use of the Iron Knight North hematite pit for an in-pit tailings storage facility, following the cessation of mining in this area.

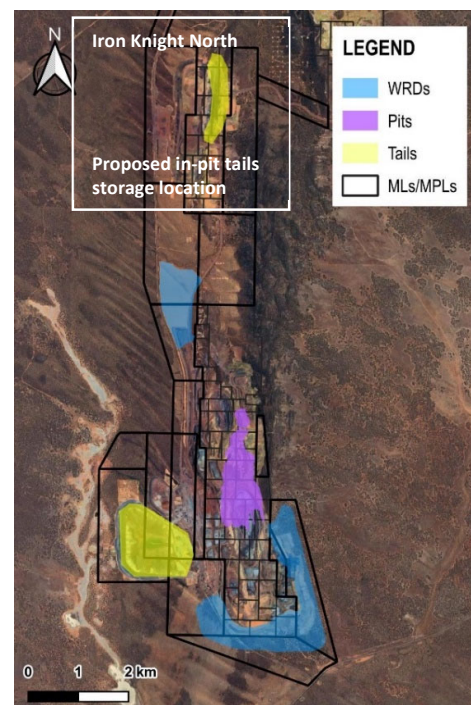


Figure 3: The hematite pit at Iron Knight North is the proposed location for in-pit tailings storage.

Regulatory Approval Status

Duchess Pit

- ✓ Operating under approved PEPR
- Change in operations application (expansion of the existing waste rock storage onto a new Miscellaneous Purposes Licence area) and PEPR update will be required to enable proposed LOM program of works
- Change in operation application then PEPR update to enable the disposal of magnetite tails in the Iron Knight North pit.

Environmental Impact Assessment

As part of the cut back at the Duchess magnetite deposit, a number of technical and environmental studies are being undertaken to support the identification and minimisation of potential impacts. These include assessments on noise, water, air quality, geochemistry and ecology.

Exploration

The Chieftain West resource exploration program has progressed throughout 2023 and will continue in 2024 to further define the magnetite deposit.

Stakeholder and Community Engagement

SIMEC Mining remains committed to engaging with stakeholders and community throughout the lifecycle of the SMR operations.

Importantly, information will be shared with relevant stakeholder at key milestones and at points of interest which may include:

- Updates or changes to the project
- Environmental and technical study findings

Further Information

All approved program documentation is available via the Department for Energy and Mining's website <https://www.energymining.sa.gov.au/industry/minerals-and-mining/mining/major-projects-and-mining-activities/major-operating-and-approved-mines/middleback-ranges>

To find out the latest about the MEP2, please get in contact via the details below and request the project specific update.

If you would like further information on the SMR operations or developments, please contact SIMEC Mining's Community and Stakeholder team on the following details.

M: 0423 937 526 / E: mininginfo@simecgrg.com

W: <https://gfgalliancewhyalla.com/>